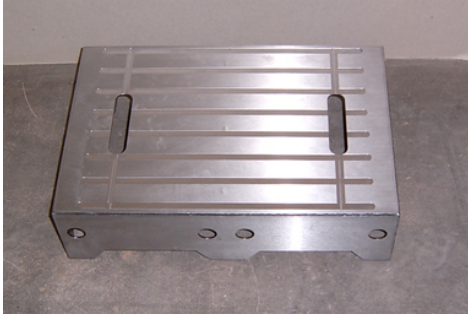
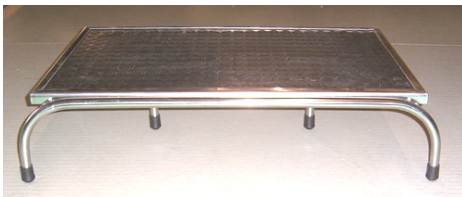


Surgeon's platforms are made from stainless steel with non-slip feet for safety.
Several platforms can be placed together to give the surgeon better access to the patient.



Standard platform size:
300 x 460 x 130mm high

Surgeon's steps ensure that the surgeon has ideal posture when accessing larger patients.
Available in three standard sizes. Heavy duty double steps available. Other sizes to order.



Awaiting Photo

Standard platform sizes:
300 x 450 x 150mm high
300 x 900 x 150mm high
300 x 900 x 200mm high

Heavy duty double steps



Contact us for details of other products in our range of stainless steel accessories for operating theatres.